

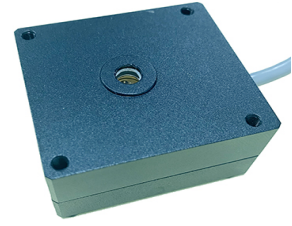


## UV Sensor Probe

Model: HSP-UVx-1y

### General features:

- Compact package with sapphire window
- Single power supply
- Analog 0-5 V or 4-20 mA output
- High sensitivity and proved reliability



**Applications:** weak ultraviolet light detection, biological detection, arc detection

### Specifications:

General parameters				
Dimensions	Window diameter (mm)	Weight (g)	Case material	
See drawing below	5	105	Al	
Parameters	Symbol	Value	Unit	Remark
Maximum ratings				
Operation temperature	$T_{op}$	-20-65	°C	
Storage temperature	$T_{sp}$	-30-85	°C	
Electro-optical characteristics (25 °C)				
Supply voltage	$V_{cc}$	7-24	V	DC
Output signal	$I_{out}$	4-20	mA	2 wire circuit (HSP-UVx-11) 3 wire circuit (HSP-UVx-12)
	$V_{out}$	0-5	V	3 wire circuit (HSP-UVx-13)
Detection wavelength range <sup>1</sup>	$\lambda$	220-290	nm	HSP-UVC-1y
		220-325		HSP-UVB-1y
		220-370		HSP-UVA-1y
		290-440		HSP-UVV-1y
UV power intensity measurement range	P	0-10	$\mu\text{W}/\text{cm}^2$	See other options <sup>2</sup>
Connection				
Cable length <sup>3</sup>	2 m			

<sup>1</sup> UVA, UVB, UVC, UVV and full UV band are all available upon request.

<sup>2</sup> UV power intensity measurement range: 0-100 mW/cm<sup>2</sup> (standard), 0-1 W/cm<sup>2</sup> (option).

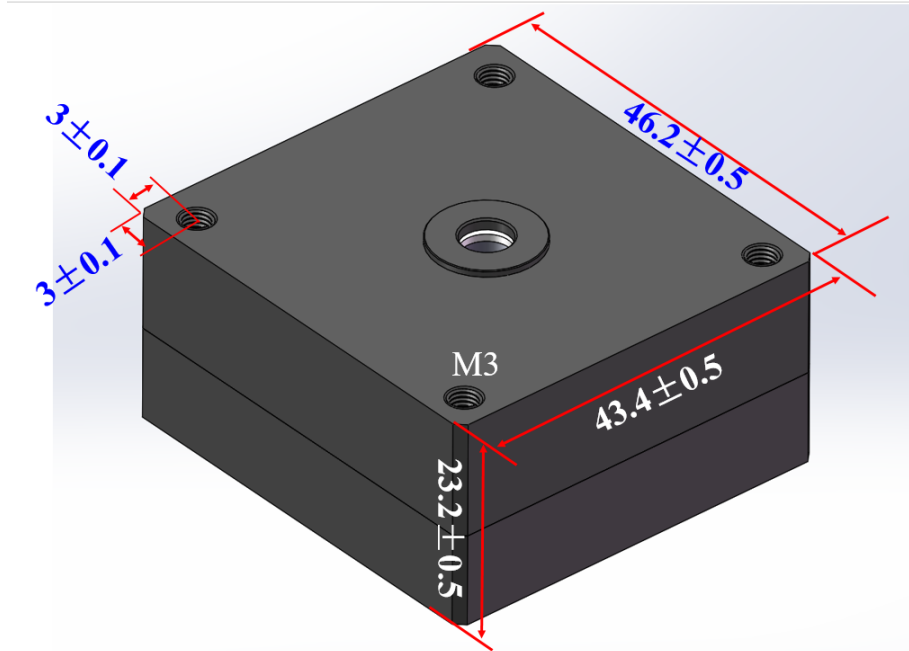
<sup>3</sup> Cable length can be customized upon request.



## UV Sensor Probe

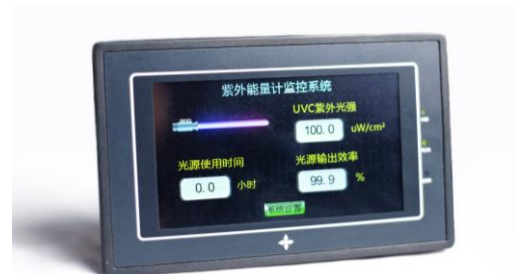
Model: HSP-UVx-1y

Drawing (unit: mm)



### Touchscreen UV radiometer (optional)

- Fully compatible with all GaNo Opto's UV sensor probes
- Real time display of UV power density, UV source accumulated service time and UV source output efficiency
- System settings for UV output calibration, timer reset, operation status cartoon, threshold of failure alarm and initial 100% output efficiency normalization
- One channel input and 24 V power supply
- Customized Chinese and English versions



### Lite-edition UV radiometer (optional)

- Fully compatible with all GaNo Opto's UV sensor probes
- 5 digital real time display of UV power density
- Pre-calibration or re-calibration for specific UV light source upon request
- Optional RS-485 or relay output
- One channel input and 9-24 V power supply

